

7.

LAS4 Series

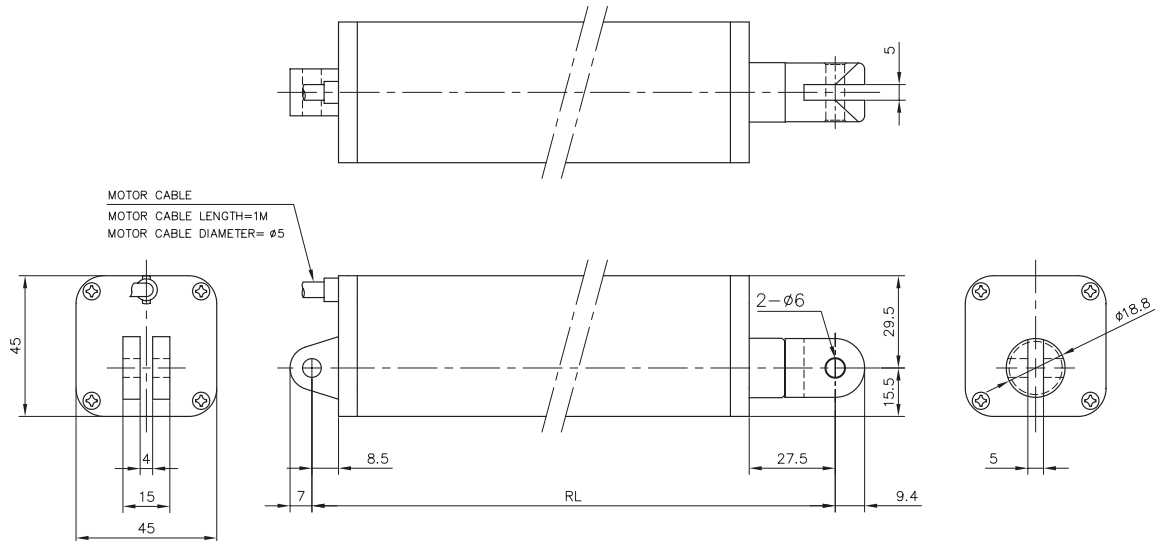
LAS4



Screw type	ACME
Weight*	0.8 kg
Protection	IP54
Compatible controller	LAK2 / LAK2B / LAK6B
Working temp	+5°C ~ 40°C

\* Stroke length 200 mm

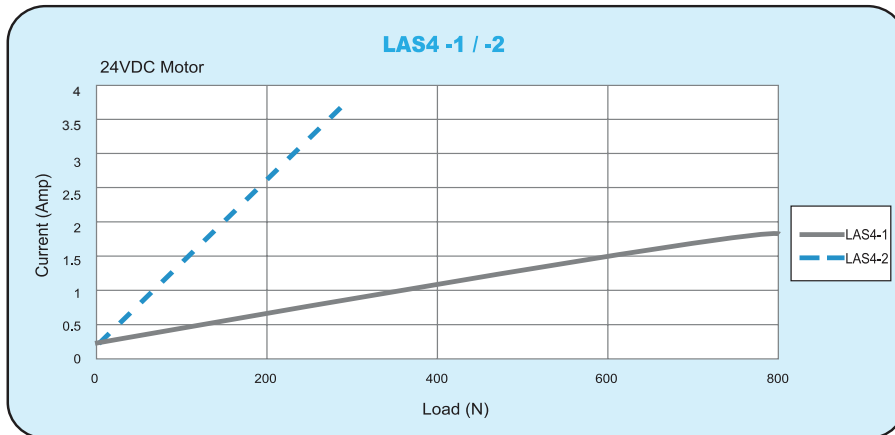
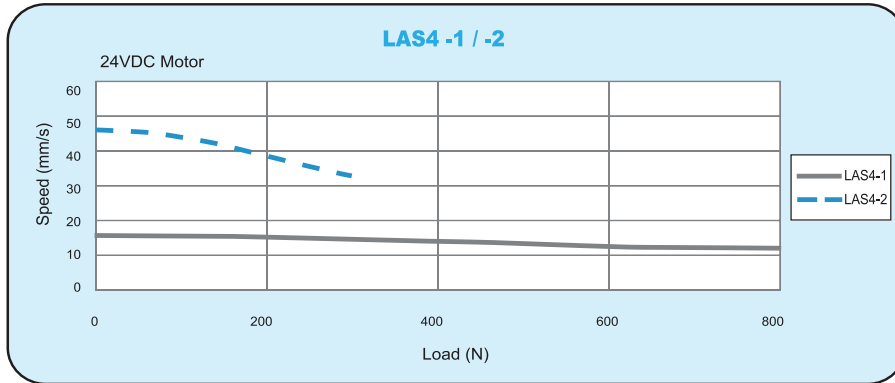
\* Option: IP65



- $RL = S + 222.5$  (LAS4-1/-2)  
 RL : Retracted length  
 S : Stroke length

• **LAS4 Specifications**

Model	Thrust max. (N)	Pulling max. (N)	Holding force max. (N)	Speed (mm/s) Load=Max./Load=0	Standard stroke (mm) : S					Duty cycle %	Max. current (A)	
					100	150	200	250	300		12VDC	24VDC
LAS4-1	800	800	800	10 / 15	100	150	200	250	300	10	5	1.8
LAS4-2	300	300	200	30 / 46	100	150	200	250	300	10	6	3.6



**Note: The test results are obtained by using 24VDC power supply.**

• **Ordering Information**

