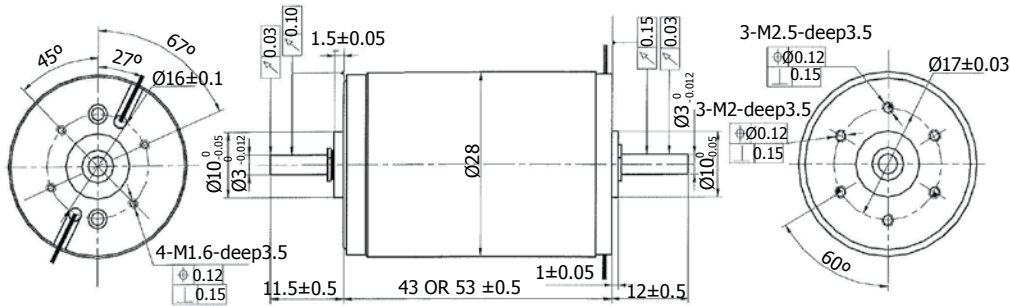


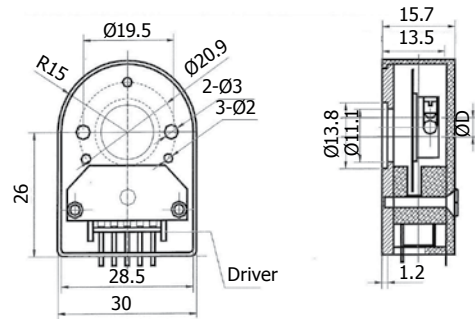
MOTOR DATA - See inside cover for motor cross reference



ENCODER DATA - See inside cover for motor cross reference

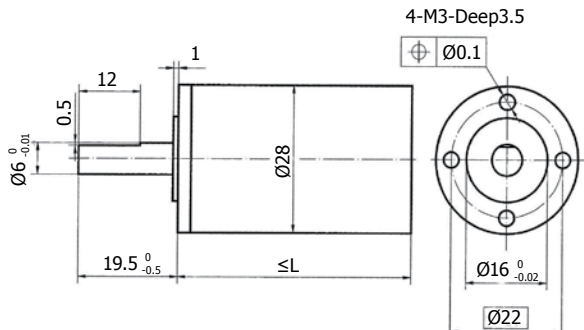
ECVK30

Output wave	Square wave
Output signals	A, B, Z phase
Output current	0~5mA
Response Frequency	0~100KHz
Output phase difference	90°±45°
Supply voltage	5V DC
Current consumption	≤40mA
Number of pulses	50, 100, 200, 256, 360, 400, 500, 512
Working temperature	-40 ~ 100°C
Protection class	IP50
150mm Cable Included	



GEARHEAD DATA - See inside cover for motor cross reference

GAVK28



GEARHEAD RATIOS

Stage	Ratio	Length (mm)
1	4:1	23.2
2	12.76:1	27.7
3	50.98:1	32.2
4	182:1	36.7
5	580.12:1	41.2
6	2598.92:1	45.7

Stage	Length	Continuous Torque	Intermittent Torque	Efficiency	Backlash
	mm	Nm	Nm	%	°
1	23.2	0.5	0.8	90	≤1
2	27.7	0.6	0.9	81	≤1.5
3	32.2	1.3	1.9	73	≤1.5
4	36.7	1.8	2.7	65	≤1.5
5	41.2	2	3	60	≤1.5
6	45.7	2	3	55	≤1.5

Shaftload, max:(radial)	≤100N
Shaftload, max:(axial)	≤80N
Shaft press fit force, max	≤100N
Shaft play (on bearing output),(radial)	≤0.05mm
Shaft play (on bearing output),(axial)	≤0.1mm
Operating Temperature range	-30 ~ +125°C
Planetary Construction	