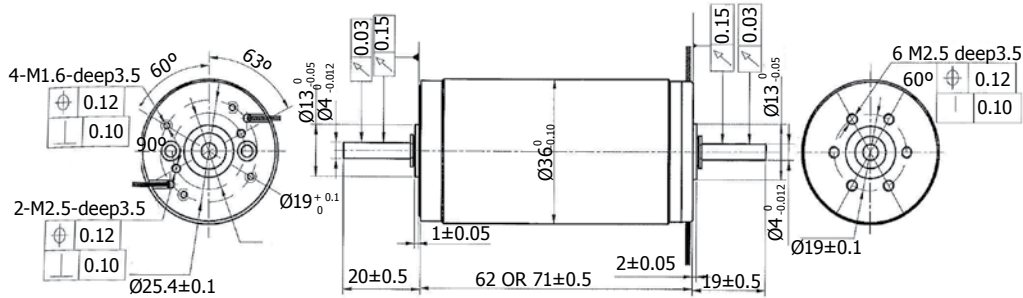


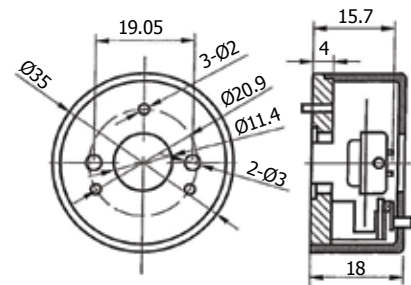
MOTOR DATA - See inside cover for motor cross reference



ENCODER DATA - See inside cover for motor cross reference

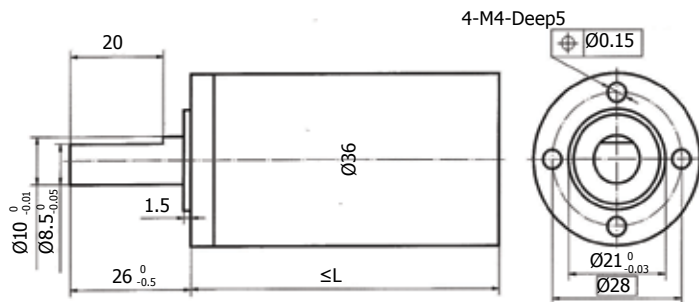
ECVK35

Output wave	Square wave
Output signals	A, B, Z phase
Output current	0~5mA
Response Frequency	0~100KHz
Output phase difference	90°±45°
Supply voltage	5V DC
Current consumption	≤65mA
Number of pulses	100, 200, 256, 360, 400, 500, 512, 942
Working temperature	-25 ~ 85°C
Protection class	IP50
150mm Cable Included	



GEARHEAD DATA - See inside cover for motor cross reference

GAVK36



GEARHEAD RATIOS

Stage	Ratios		Length (mm)
1	4:1	6:1	40
2	14:1	16:1	46.6
	24:1		
3	49:1	64:1	53.2
	84:1	96:1	
	126:1	144:1	
4	256:1	384:1	59.8
5	525.22:1	1:1029	66.4
	784:1		

Stage	Length	Continuous Torque	Intermittent Torque	Efficiency	Backlash
	mm	Nm	Nm	%	°
1	40	1.5	2	90	≤0.5
2	46.6	5	6	83	≤0.8
3	53.2	10	12	77	≤1
4	59.8	16	18	72	≤1.2
5	66.4	20	30	67	≤1.5

Shaftload, max:(radial)	≤100N
Shaftload, max:(axial)	≤80N
Shaft press fit force, max	≤100N
Shaft play (on bearing output),(radial)	≤0.05mm
Shaft play (on bearing output),(axial)	≤0.1mm
Operating Temperature range	-30 ~ +125°C
Planetary Construction	