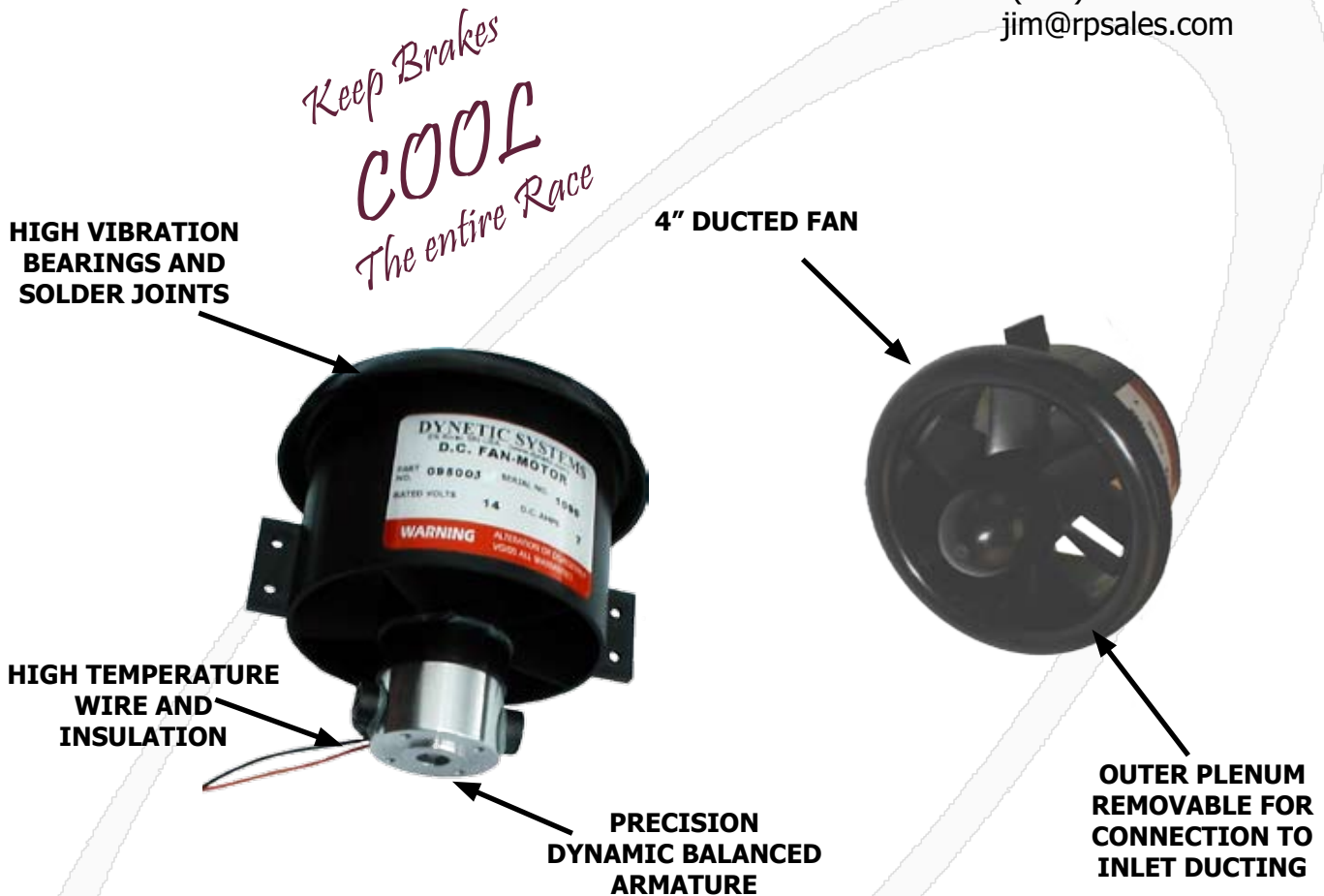


Serving the motion control industry for over 30 years, Dynetic Systems recently designed and built to stock this fan motor for the harsh environment of NASCAR racing. It is primarily used to cool front ends on short tracks or road races, but also used for Kool suit fan cooling or transmission cooling.

DEALER

Authorized Representative
to NASCAR

Reliable Precision Sales, Inc.
James McElheney
(704) 568-1485
jim@rpsales.com

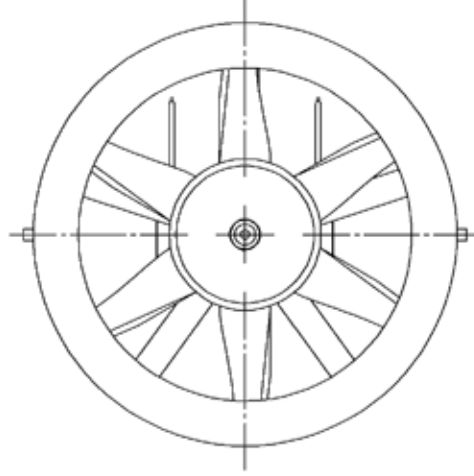
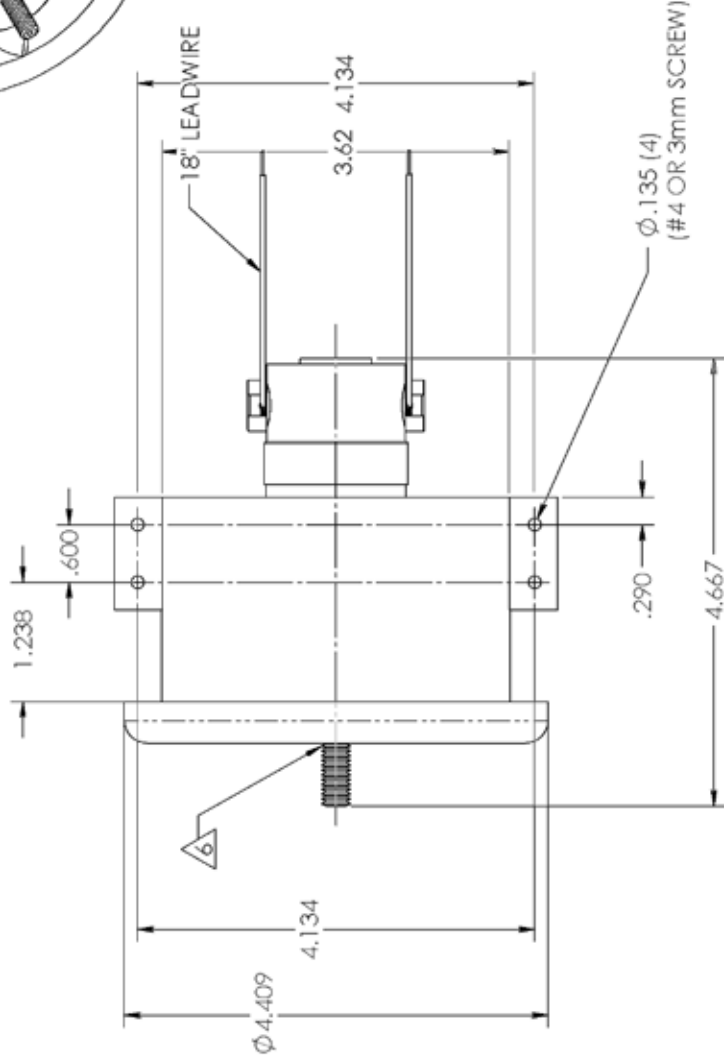
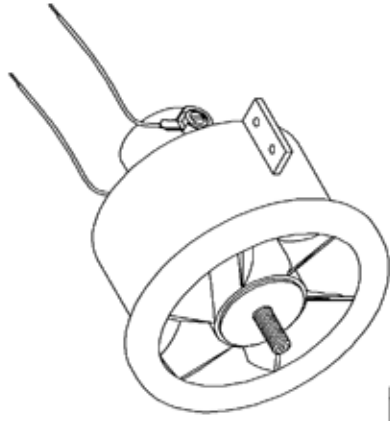


- Operates on in-car voltage of 13.8 vdc
- Light weight 30W motor operates at 50W continuously
- Weighs only 13 oz.
- Replaceable brush kits available to extend life
- Lasts 16 times longer than marine supply store fans
- Supplies twice the airflow rate
- Keeps brake dust from building up in wheels

**Manufacturer of Highly Engineered
DC Motors and Motion Accessories**

19128 Industrial Blvd.
Elk River, MN 55330 USA
(763) 441-4300
(763) 441-5217 fax
sales@dynetic.com
www.dynetic.com

REV	ECO #	DESCRIPTION OF CHANGE	BY	DATE	CHKD
A	1223	RELEASE	RSM	7/19/2005	TJB
B	1254	UPDATED MOTOR DETAILS	RSM	9/21/2005	TJB
C	1289	UPDATE DESCRIPTION	MLV	11/21/2005	TJB



MOTOR CHARACTERISTICS	
RATED VOLTAGE D.C.	13.8 VOLTS
RATED CURRENT	4.2 AMPS
RATED TORQUE	6 OZ-IN
RATED SPEED	11,300 RPM +/-15%
RATED POWER OUT	50 WATTS +/-15%
NO LOAD SPEED	12,500 RPM +/-15%
NO LOAD CURRENT	0.7 AMPS MAX
BACK EMF CONSTANT	1.02 V/KRPM +/-10%
TORQUE CONSTANT	1.39 OZ-IN/AMP +/-10%
DC ARMATURE RESISTANCE AT 1.5 AMPS	0.6 OHMS +/-15%
STATIC FRICTION	0.5 OZ-IN MAX
ENDPLAY WITH 5 POUND REVERSING SHAFT TIR	0.005 INCHES MAX
ARMATURE INERTIA	0.001 INCHES MAX
	0.0006 OZ-IN/SEC2 REF

- UNIT FEATURES:**
- Replaceable brushes
 - ABEC 3 or better ball bearings
 - Diamond machined commutators
 - Dynamically balanced armature
 - Rugged, durable design
 - Class H 180° Insulation
 - High Vibration Modifications
 - Light Weight: 3/4lb (120z)

DO NOT SCALE DRAWING	DATE
APPROVALS	DATE
DESIGNER	DATE
DR/1965	

SCALE	1:1
SCALE	1:1

THESE DIMENSIONS INCLUDE TOLERANCES UNLESS OTHERWISE SPECIFIED.
 UNLESS OTHERWISE SPECIFIED, ALL DIMENSIONS ARE IN INCHES.
 UNLESS OTHERWISE SPECIFIED, ALL DIMENSIONS ARE IN MILLIMETERS.
 UNLESS OTHERWISE SPECIFIED, ALL DIMENSIONS ARE IN MILLIMETERS.
 UNLESS OTHERWISE SPECIFIED, ALL DIMENSIONS ARE IN MILLIMETERS.

DYNATEC SYSTEMS
 Elk River, Minnesota
 FM1509L-XX/DF-4/S
 FAN MOTOR, LOW AMP
 C 095003