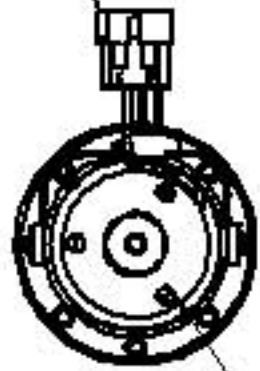


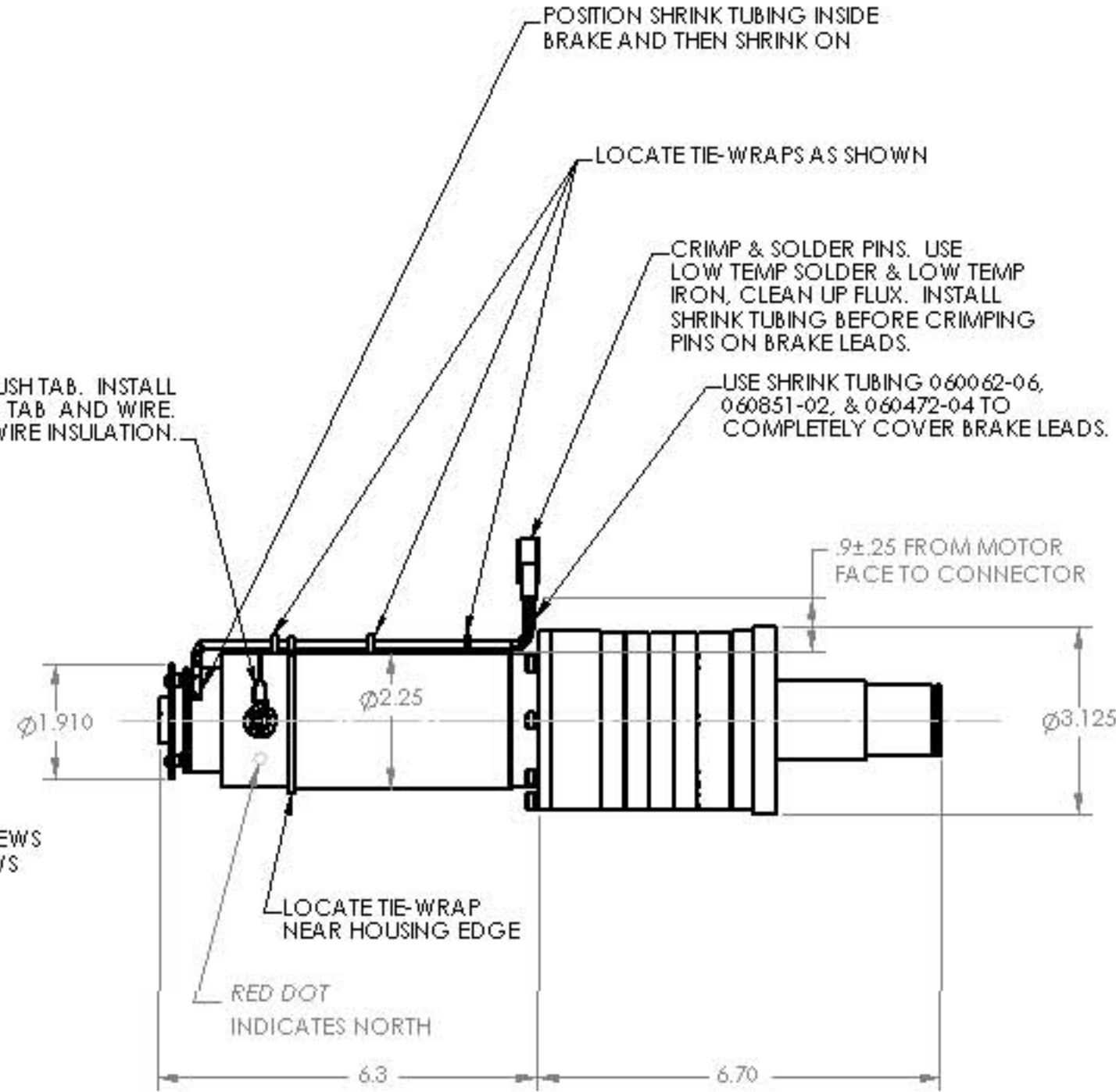
CONNECTOR PIN OUT		
PIN #	WIRE	ORIGIN
1	RED	MOTOR (+)
2	BLACK	MOTOR (-)
3	WHITE	BRAKE
4	WHITE	BRAKE

PIN 1
DARKEN ANGLED SIDES
OF CONNECTOR WITH
PERMANENT MARKER TO
SHOW PIN 1

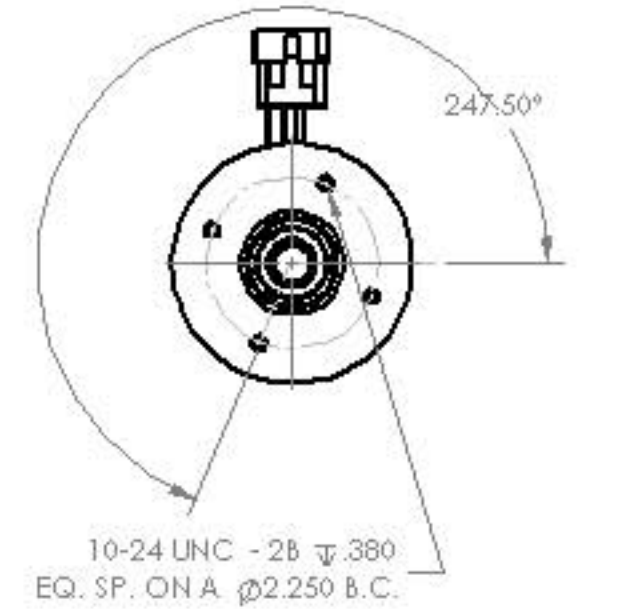


SOLDER WIRE TO BRUSHTAB. INSTALL
HEAT SHRINK TUBING OVER TAB AND WIRE.
DO NOT DAMAGE WIRE INSULATION.

SECURE BRAKE SET SCREWS
AND MOUNTING SCREWS
WITH LOCTITE.



DIRECTION OF MOTOR ROTATION
WITH (+) APPLIED TO PIN#1 AND
VIEWED FROM THIS END
CW



MOTOR CHARACTERISTICS			
RATED VOLTAGE D.C.	30	VOLTS	
RATED CURRENT	4.9	AMPS	
RATED TORQUE	40	OZ-IN	
RATED SPEED	4900	RPM	+/-15%
RATED POWER OUT	1.45	WATTS	+/-15%
NO LOAD SPEED	5600	RPM	+/-15%
NO LOAD CURRENT	0.68	AMPS	MAX
BACK EMF CONSTANT	5.4	V/KRPM	+/-10%
TORQUE CONSTANT	7.3	OZ-IN/AMP	+/-10%
DC ARMATURE RESISTANCE AT 1.5 AMPS	0.7	OHMS	+/-15%
STATIC FRICTION	3	OZ-IN	MAX
ENDPLAY WITH 5 POUND REVERSING	0.005	INCHES	MAX
SHAFT TIR	0.001	INCHES	MAX
ARMATURE INERTIA	0.007	OZ-IN/SEC ²	REF

GEAR DATA			
GEAR RATIO	100:1		
EFFICIENCY	73	%	
OUTPUT TORQUE	80	IN-LBS	
SIDE LOAD	25	LBS	MAX
OUTPUT SPEED	49	RPM	+/-15%
BACKLASH	3	DEGREES	NO LOAD
PEAK TORQUE	200	IN-LB	MAX

BRAKE DATA		
TORQUE	3	LB-IN
VOLTAGE	24	VDC
CURRENT	0.19	AMPS
INERTIA	0.0017	LB-IN ²

OPERATING LIMITS			
SPEED	8000	RPM	MAX
ARMATURE TEMPERATURE	155	DEGREES C	MAX

NOTES:
1. PRECISION BALL BEARINGS.
2. SHAFT MATERIAL 303 STAINLESS STEEL.

DRIVE MOTOR ASSY
AS2230-01/BF003/GM-100/C