

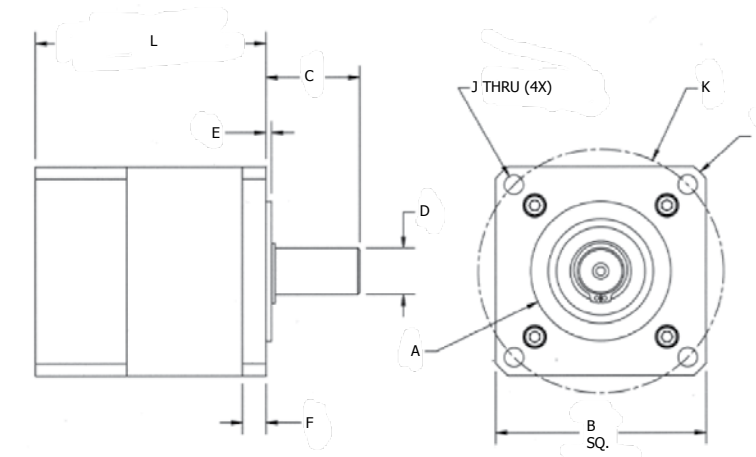
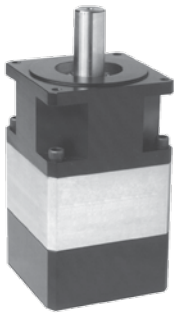
RATIOS			
1-Stage	2-Stage	3-Stage	
3:1	15:1	40:1	160:1
4:1	16:1	49:1	280:1
5:1	20:1	50:1	400:1
5.5:1	22:1	55:1	550:1
7:1	25:1	70:1	700:1
10:1	28:1	100:1	
	30:1		

Tc: Output torque is rated at 3000RPM, and a minimum life of 10,000 hours.

Actual ratios are rounded to the nearest integer

PARAMETER	MEASUREMENT	1-STAGE	2-STAGE	3-STAGE
Rated Torque (dependent on ratio)	in-lbs	56-167	52-183	136-185
Peak Torque (dependent on ratio)	in-lbs	84-261	77-285	212-286
Efficiency	percent	90%	85%	80%
Backlash	arc min	6 / 3	10 / 5	14 / 7
Operating Temp	°C	-50 to +232	-50 to +232	-50 to +232
Bearings		yes	yes	yes
Caged Roller Bearings on Planet Gears		yes	yes	yes
A - Pilot Diameter	in.	.864/.866	.864/.866	.864/.866
B - Flange	in.	1.65	1.65	1.65
C - Shaft Length	in.	1.25	1.25	1.25
D - Shaft Diameter	in.	.4995/.5000	.4995/.5000	.4995/.5000
E - Pilot Length	in.	0.062	0.062	0.062
F - Flange Thickness	in.	0.187	0.187	0.187
I - Housing Diameter	in.	2.05	2.05	2.05
J - Bolt Hole Diameter	in.	0.125	0.125	0.125
K - Bolt Hole Circle	in.	1.725	1.725	1.725
L - GH Length	in.	2.62	3.28	3.77
Output Axial Load	lbs.	120	120	120
Weight	lbs.	1.0	1.6	2.2

GC23
NEMA - HIGH TORQUE, LOW BACKLASH

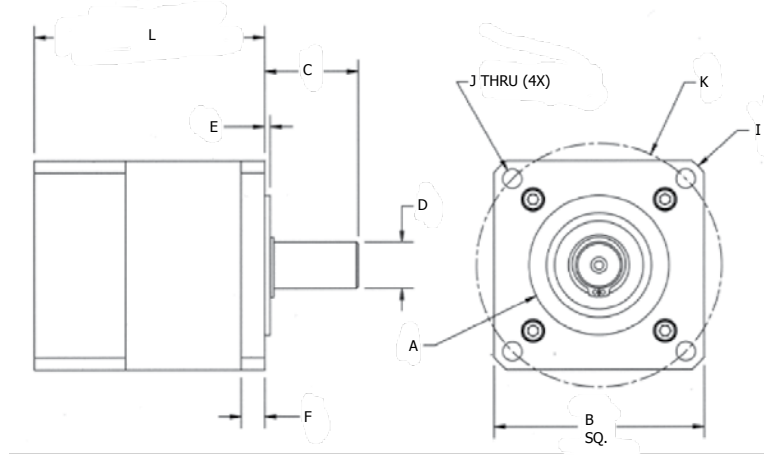
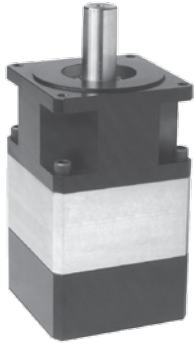


RATIOS			
1-Stage	2-Stage	3-Stage	
3:1	15:1	40:1	160:1
4:1	16:1	49:1	280:1
5:1	20:1	50:1	400:1
5.5:1	22:1	55:1	550:1
7:1	25:1	70:1	700:1
10:1	28:1	100:1	
	30:1		

Actual ratios are rounded to the nearest integer

Tc: Output torque is rated at 3000RPM, and a minimum life of 10,000 hours.

Parameter	Measurement	1-Stage	2-Stage	3-Stage
Rated Torque (dependent on ratio)	in-lbs	119-380	110-408	303-409
Peak Torque (dependent on ratio)	in-lbs	179-594	164-639	473-640
Efficiency	percent	90%	85%	80%
Backlash	arc min	6 / 3	10 / 5	14 / 7
Operating Temp	°C	-50 to +232	-50 to +232	-50 to +232
Bearings		yes	yes	yes
Caged Roller Bearings on Planet Gears		yes	yes	yes
A - Pilot Diameter	in.	1.498/1.500	1.498/1.500	1.498/1.500
B - Flange	in.	2.25	2.25	2.25
C - Shaft Length	in.	1.25	1.25	1.25
D - Shaft Diameter	in.	.4995/.5000	.4995/.5000	.4995/.5000
E - Pilot Length	in.	0.062	0.062	0.062
F - Flange Thickness	in.	0.250	0.250	0.250
I - Housing Diameter	in.	2.95	2.95	2.95
J - Bolt Hole Diameter	in.	0.205	0.205	0.205
K - Bolt Hole Circle	in.	2.625	2.625	2.625
L - GH Length	in.	2.66	3.48	4.27
Output Axial Load	lbs.	160	160	160
Weight	lbs.	1.8	2.8	3.8



RATIOS			
1-Stage	2-Stage	3-Stage	
3:1	15:1	40:1	160:1
4:1	16:1	49:1	280:1
5:1	20:1	50:1	400:1
5.5:1	22:1	55:1	550:1
7:1	25:1	70:1	700:1
10:1	28:1	100:1	
	30:1		

Tc: Output torque is rated at 3000RPM, and a minimum life of 10,000 hours.

Actual ratios are rounded to the nearest integer

PARAMETER	MEASUREMENT	1-STAGE	2-STAGE	3-STAGE
Rated Torque (dependent on ratio)	in-lbs	552-1285	507-1430	1090-1458
Peak Torque (dependent on ratio)	in-lbs	828-2008	761-2235	1703-2278
Efficiency	percent	90%	85%	80%
Backlash	arc min	6 / 3	10 / 5	14 / 7
Operating Temp	°C	-50 to +232	-50 to +232	-50 to +232
Bearings		yes	yes	yes
Caged Roller Bearings on Planet Gears		yes	yes	yes
A - Pilot Diameter	in.	2.873/2.875	2.873/2.875	2.873/2.875
B - Flange	in.	3.25	3.25	3.25
C - Shaft Length	in.	1.50	1.50	1.25
D - Shaft Diameter	in.	.7495/.7500	.7495/.7500	.7495/.7500
E - Pilot Length	in.	0.062	0.062	0.062
F - Flange Thickness	in.	0.312	0.312	0.312
I - Housing Diameter	in.	4.38	4.38	4.38
J - Bolt Hole Diameter	in.	0.220	0.220	0.220
K - Bolt Hole Circle	in.	3.875	3.875	3.875
L - GH Length	in.	4.19	5.31	6.53
Output Axial Load	lbs.	283	283	283
Weight	lbs.	7.0	8.0	9.0