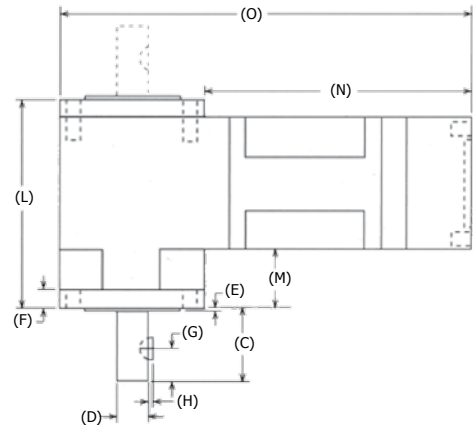
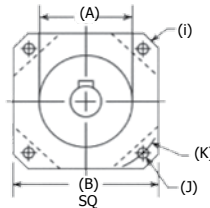


RATIOS

1-Stage	2-Stage	3-Stage
3:1	15:1	40:1
4:1	16:1	49:1
5:1	20:1	50:1
5.5:1	22:1	55:1
7:1	25:1	70:1
10:1	28:1	100:1
	30:1	

Actual ratios are rounded to the nearest integer

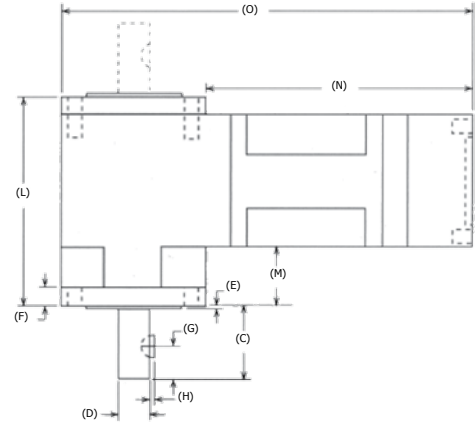
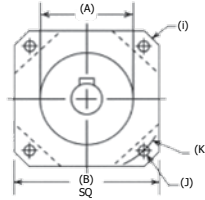
PARAMETER	MEASUREMENT	1-STAGE	2-STAGE	3-STAGE
Rated Torque (dependent on ratio)	in-lbs	56-167	52-183	136-185
Peak Torque (dependent on ratio)	in-lbs	261	285	286
Efficiency	percent	85%	80%	75%
Backlash	arc min	11 / 8	15 / 10	19 / 12
Operating Temp	°C	-45 to +123	-45 to +123	-45 to +123
Bearings		yes	yes	yes
Caged Roller Bearings on Planet Gears		yes	yes	yes
A - Pilot Diameter	in.	.864/.866	.864/.866	.864/.866
B - Flange	in.	1.65	1.65	1.65
C - Shaft Length	in.	1.25	1.25	1.25
D - Shaft Diameter	in.	.3745/.3750	.3745/.3750	.3745/.3750
E - Pilot Length	in.	0.062	0.062	0.062
F - Flange Thickness	in.	0.250	0.250	0.250
G - Key Location	in.	0.56	0.56	0.56
H - Key Height	in.	0.063	0.063	0.063
I - Housing Diameter	in.	2.05	2.05	2.05
J - Bolt Hole Diameter	in.	0.125	0.125	0.125
K - Bolt Hole Circle	in.	1.725	1.725	1.725
L - Right Angle Width	in.	2.72	2.72	2.72
M - Overhang Width	in.	0.82	0.82	0.82
N - Gearhead Length	in.	4.97	5.51	6.11
Axial Shaft Load	lbs.	400	400	400
Radial Shaft Load	lbs.	400	400	400
Woodruff Key		#303	#303	#303
Weight	lbs.	2.8	3.4	4.0



RATIOS			
1-Stage	2-Stage	3-Stage	
3:1	15:1	40:1	160:1
4:1	16:1	49:1	280:1
5:1	20:1	50:1	400:1
5.5:1	22:1	55:1	550:1
7:1	25:1	70:1	700:1
10:1	28:1	100:1	
	30:1		

Actual ratios are rounded to the nearest integer

PARAMETER	MEASUREMENT	1-STAGE	2-STAGE	3-STAGE
Rated Torque (dependent on ratio)	in-lbs	119-380	110-408	303-409
Peak Torque (dependent on ratio)	in-lbs	594	639	640
Efficiency	percent	85%	80%	75%
Backlash	arc min	11 / 8	15 / 10	19 / 12
Operating Temp	°C	-45 to +123	-45 to +123	-45 to +123
Bearings		yes	yes	yes
Caged Roller Bearings on Planet Gears		yes	yes	yes
A - Pilot Diameter	in.	1.498/1.500	1.498/1.500	1.498/1.500
B - Flange	in.	2.25	2.25	2.25
C - Shaft Length	in.	1.25	1.25	1.25
D - Shaft Diameter	in.	.4995/.5000	.4995/.5000	.4995/.5000
E - Pilot Length	in.	0.062	0.062	0.062
F - Flange Thickness	in.	0.312	0.312	0.312
G - Key Location	in.	0.56	0.56	0.56
H - Key Height	in.	0.063	0.063	0.063
I - Housing Diameter	in.	2.95	2.95	2.95
J - Bolt Hole Diameter	in.	0.205	0.205	0.205
K - Bolt Hole Circle	in.	2.625	2.625	2.625
L - Right Angle Width	in.	3.55	3.55	3.55
M - Overhang Width	in.	0.99	0.99	0.99
N - Gearhead Length	in.	6.49	7.32	8.1
Axial Shaft Load	lbs.	600	600	600
Radial Shaft Load	lbs.	600	600	600
Woodruff Key		#404	#404	#404
Weight	lbs.	4	5	6

**RATIOS**

1-Stage	2-Stage	3-Stage
3:1	15:1	40:1
4:1	16:1	49:1
5:1	20:1	50:1
5.5:1	22:1	55:1
7:1	25:1	70:1
10:1	28:1	100:1
	30:1	

Actual ratios are rounded to the nearest integer

PARAMETER	MEASUREMENT	1-STAGE	2-STAGE	3-STAGE
Rated Torque (dependent on ratio)	in-lbs	552-1285	507-1430	1090-1458
Peak Torque (dependent on ratio)	in-lbs	2008	2235	2278
Efficiency	percent	85%	80%	75%
Backlash	arc min	11 / 8	15 / 10	19 / 12
Operating Temp	°C	-45 to +123	-45 to +123	-45 to +123
Bearings		yes	yes	yes
Caged Roller Bearings on Planet Gears		yes	yes	yes
A - Pilot Diameter	in.	2.873/2.875	2.873/2.875	2.873/2.875
B - Flange	in.	3.25	3.25	3.25
C - Shaft Length	in.	1.50	1.50	1.50
D - Shaft Diameter	in.	.7495/.7500	.7495/.7500	.7495/.7500
E - Pilot Length	in.	0.062	0.062	0.062
F - Flange Thickness	in.	0.500	0.500	0.500
G - Key Location	in.	0.56	0.56	0.56
H - Key Height	in.	0.094	0.094	0.094
I - Housing Diameter	in.	4.38	4.38	4.38
J - Bolt Hole Diameter	in.	0.220	0.220	0.220
K - Bolt Hole Circle	in.	3.875	3.875	3.875
L - Right Angle Width	in.	5.14	5.14	5.14
M - Overhang Width	in.	1.38	1.38	1.38
N - Gearhead Length	in.	9.16	10.29	11.51
Axial Shaft Load	lbs.	900	900	900
Radial Shaft Load	lbs.	900	900	900
Woodruff Key		#606	#606	#606
Weight	lbs.	12.5	13.5	14.5